



eternity

3

\$2.50

\$3.15 Canada

zillion

TOM MASON • HARRISON FONG

ZILLION™



FROM THE
HIT ANIME!

ZILLION™

tom mason
writer

harrison fong
artist/cover artist

albert deschesne
cover color design

moose
cover color

tim eldred
letterer

bruce lewis k.o.a.m.
graphic design

mark paniccia
editor



eternity

MALIBU COMICS ENTERTAINMENT, INC.
Scott Rosenberg/Malibu Comics President
Bob Jacob/Malibu Interactive President

Dave Olbrich/Publisher
Chris Ulm/Editor-In-Chief
Tom Mason/Creative Director

MALIBU EDITORIAL
Dan Danko/Senior Editor
Hank Kanalz, Roland Mann,
Mike Brown, Mark Paniccia, Robert Conte/Editors
Eileen Eldred, Kara Lamb,
Steve Lowry, Diane Botta/Assistant Editors

MALIBU FILMS
Darren Doane/Director
Ken Daurio/Technical Director
Candice Sher/Production Coordinator

MALIBU DESIGN
Jim Chadwick/Art Director
Kim Schalter/Design Editor
Jerry Bingham/Art Consultant
Bruce Lewis k.o.a.m./Designer
Edgar Carlos, Anne Chien, Ty Rulli, Jennifer
Schellinger/Designers

MALIBU ART DEPARTMENT
Tim Eldred/Senior Artist
Albert Deschesne, David Lanphear, Jason Levine,
Patrick Owsley, Larry Welch/Artists

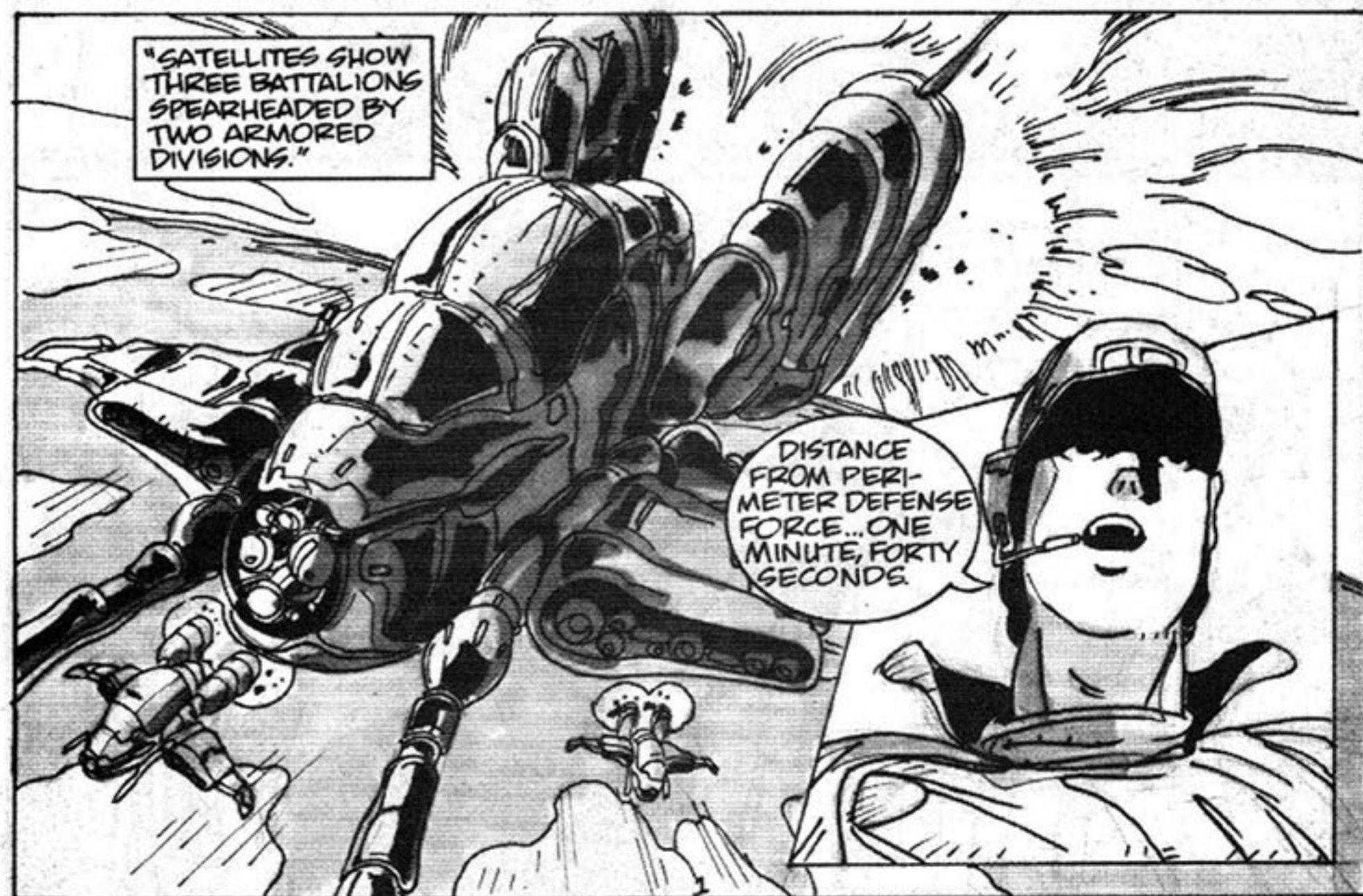
MALIBU COLORING
Jennel Cruz, Albert Calleros/Senior Colorists
Foodhammer, Violent Hues, Family Fugue/Color Groups

MALIBU COLOR SEPARATIONS
Edd Hendricks/Computer Graphics Manager
Rich Dodson, Eric Ulm, Ron Edison/Output Technicians

MALIBU SALES
John Riley/Director, Sales & Marketing
Alan J. Payne/Direct Marketing Director
Penny Arévalo/Communications Manager
Shawn White/Direct Sales Coordinator
Paula Eisel/Advertising Liason
Ty Rulli/Advertising Manager

MALIBU FINANCE
Christine Hsu/Controller
Kirk Patterson/Accounting Manager
Anna Corsi/Accounts Payable
Carolyn Ferrari/Accounts Receivable
Rob Sutherland/Accounting Clerk

MALIBU ADMINISTRATION
Eric Senna/Manufacturing Manager
Greig McGinness/Circulation
Gerry Kline/Special Sales & Acquisitions
Christine Jensen/International Rights
Will Maguire/Senior Counsel
Glenn Bell/Systems Administrator
Carole Seymour/Executive Secretary





PERIMETER DEFENSE FORCE HAS VISUAL CONTACT WITH THE NOZA.

WE CAN'T LET THE NOZA TAKE THE ENERGY CONTROL CENTER.



CONTACT CENTRAL COMMAND AND TELL THEM THAT WE NEED ALL THE HELP WE CAN GET.



WOULD THAT INCLUDE...?

YES... WE NEED THE WHITE KNIGHTS!



ADVISE ALL NON-MILITARY PERSONNEL TO EVACUATE!

"WE'LL NEED ALL THE TROOPS WE'VE GOT TO PROTECT THAT SILO COMPLEX AND WE CAN'T SPARE A MAN TO PROTECT CIVILIANS."



"CONSIDER IT DONE!"



EASY DOES IT, BOYS! HANGAR OPEN!

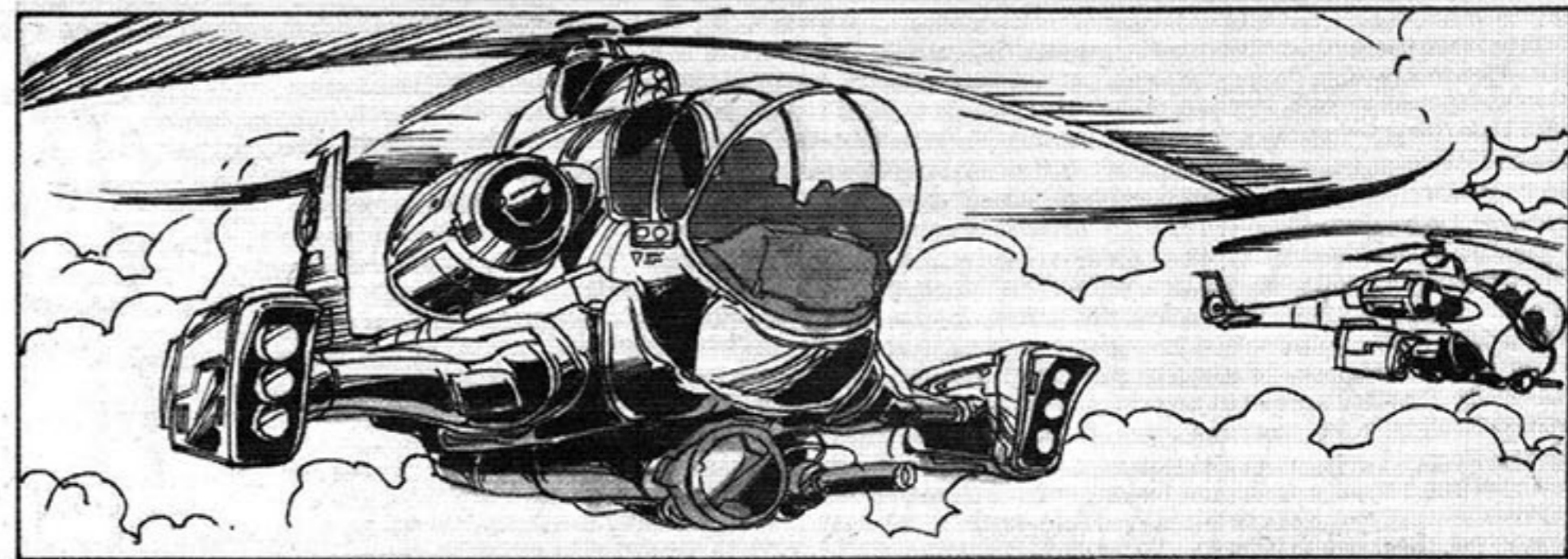
EASY... EASY...



FULL SPEED AHEAD, GENTLEMEN. WE'RE HUNTING NOZA TODAY!

FIRE & HIGH

WRITER: TOM MASON
ARTIST: HARRISON FONG
LETTERER: TIM ELDRED
EDITOR: MARK PANICCIA



UNDERSTOOD, SIR. PROTECTIVE SHIELDING UNDERWAY.

WE'LL NEED ABOUT FORTY MINUTES, AND WE'LL BE WRAPPED UP TIGHT, SAFE FROM THE IMPENDING NOZA ASSAULT.

WHAT? FIFTEEN MINUTES? THAT'S IMPOSSIBLE!



TOTAL SHIELD ACTIVATION CAN'T BE DONE IN THAT AMOUNT OF TIME!



YES, SIR, WE'LL DO OUR BEST!

BEGIN SHIELDING SEQUENCE.

ACTIVATE NOW.





THE COMPLEX IS SECURE.

EXCELLENT. YOU HAVE DONE WELL.



THE PIECES OF MY PLAN ARE FALLING INTO PLACE.



AND SOON WE CAN EXPECT AN APPEARANCE BY NO LESS THAN... THE WHITE KNIGHTS!

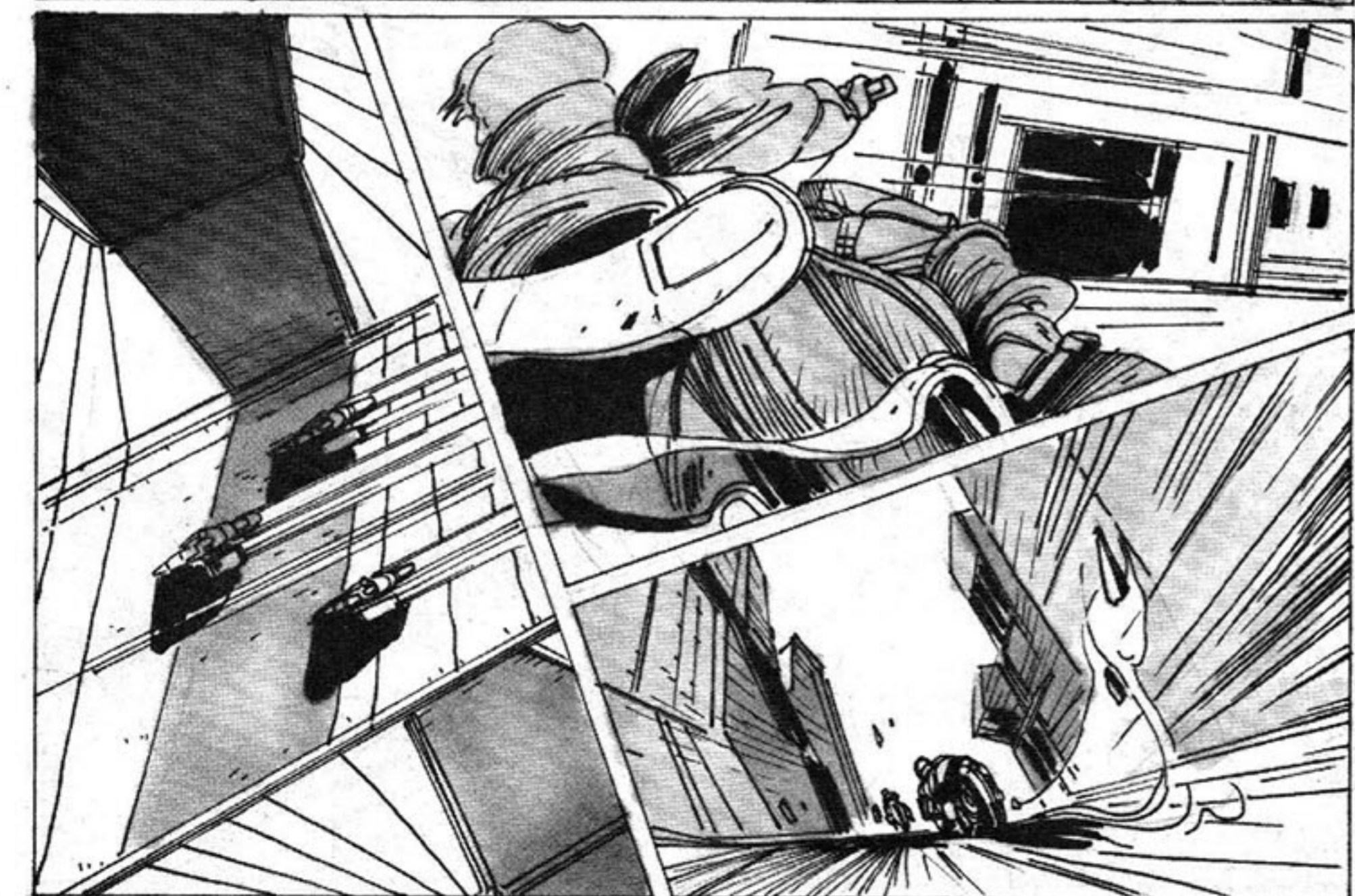
HAHAHAHA!!



YEAH!

LOOK OUT, NOZA--

HERE COME THE WHITE KNIGHTS!



NO DAMAGED SILOS THAT I CAN SEE. AT LEAST, NOT YET.



HOW DO WE KNOW THEY HAVEN'T ALREADY LEFT AND WIRED THE WHOLE PLACE WITH A TIMER CHARGE?



WE DON'T, J.J. THAT'S A CHANCE WE'LL HAVE TO TAKE.

WE ALL KNOW WHAT WE HAVE TO DO.



WHERE'S THE ENTRANCE TO THIS TUNNEL YOU WERE TALKING ABOUT, APPLE?

LET'S GO, THEN. COVER ME, GUYS!

YOU'VE GOT IT, J.J.!



I HOPE WE'RE NOT EXPECTED.

I DELIBERATELY DIDN'T CALL AHEAD.

OPEN SEZ ME!

NOZA!

YOW!

YOU DON'T HAVE TO TELL ME TWICE!

ALL RIGHT, WE'RE GOING IN ON ONE CYCLE! BE CAREFUL!



THIS ELEVATOR WILL TAKE US DOWN TO THE TUNNEL.

FROM THERE, IT'S A STRAIGHT RIDE TO THE SILO.

HANG ON...

HOW COME WE'RE ONLY TAKING ONE CYCLE?

WE HAVE TO GO IN TOGETHER AND THIS IS THE ONLY WAY. THE TUNNEL'S NOT WIDE ENOUGH FOR ALL THREE CYCLES, SIDE-BY-SIDE.

THEN HOW COME YOU'RE SITTING IN THE DRIVER'S SEAT AND I'M OVER HERE?

WHAT'S THE MATTER, J.J.?

DON'T YOU TRUST ME?



ALL RIGHT, WE'RE HERE.

REMEMBER, WE'RE IN A COMBAT ZONE.

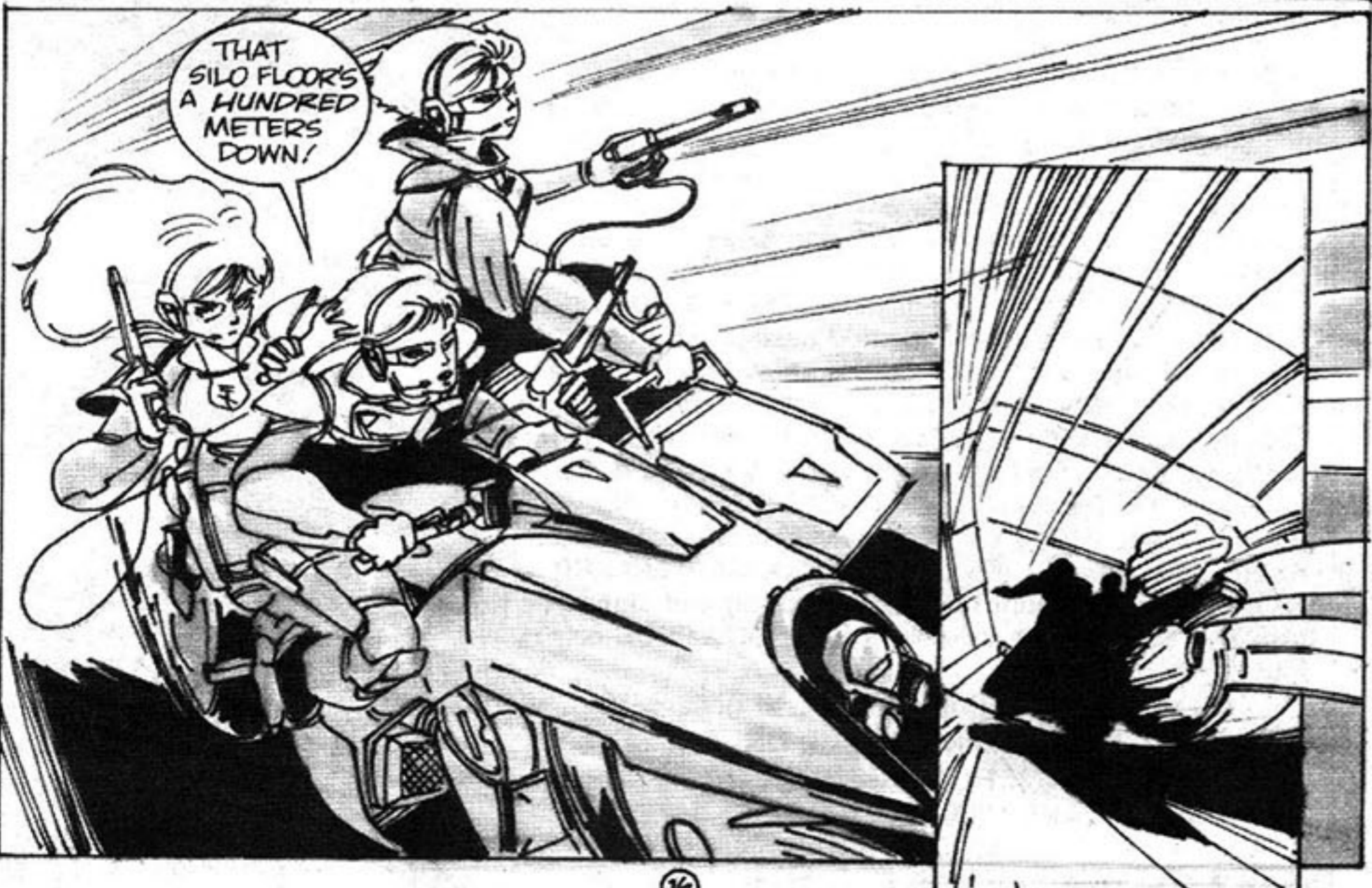
ALL THE LIGHTS ARE OFF, CHAMP. IT DOESN'T LOOK VERY INVITING.

"MAIN POWER'S DOWN. AUXILIARY SYSTEM IS ALL THEY'VE GOT LEFT."

"WE'LL HAVE TO TRUST OUR SENSORS UNTIL WE GET TO THE MAIN SILO ROOM. BUT I DON'T KNOW WHAT WE'LL FIND WHEN WE GET THERE. HAVE YOUR WEAPONS POWERED UP AND READY."

AND BE PREPARED FOR A LONG DROP..

"RIGHT!"



THAT SILO FLOOR'S A HUNDRED METERS DOWN!



INCOMING!

PACHOON PACHOON PACHOON

LET'S GIVE THEM A TASTE OF ZILLION!

I HATE FIRING AT WHAT I CAN'T SEE!

TRUST YOUR SENSORS, APPLE.

...LIKE THIS!

LET ELECTRONICS BE YOUR GUIDE...



END OF THE ROAD!

HOLD ON TIGHT!

...TO WHAT?

AAAAAHHH!

UP HERE!

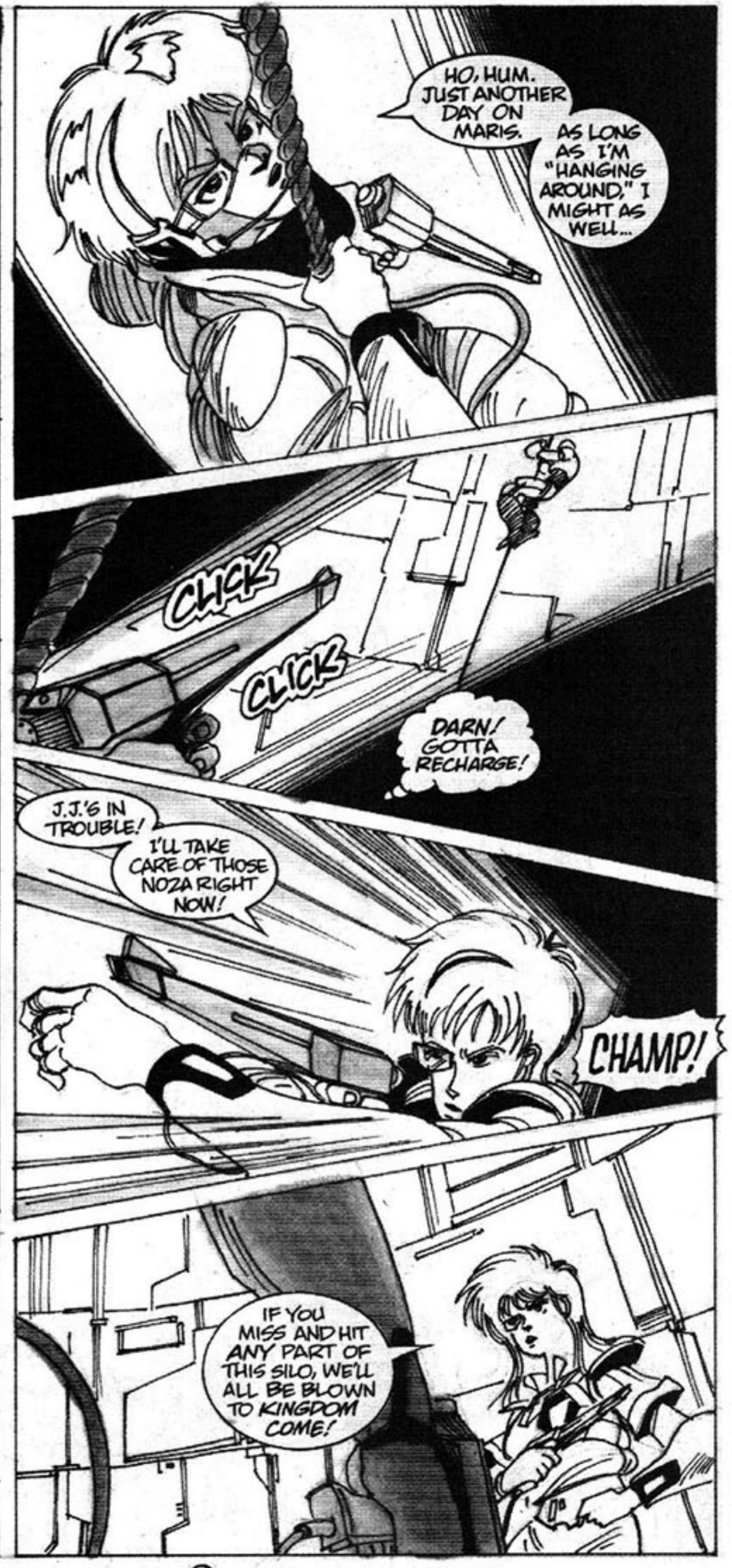
MADE IT!

J.J.? WHERE ARE YOU?



DON'T MOVE, J.J.!

YOU'VE GOT TROUBLE DEAD AHEAD!



HO, HUM. JUST ANOTHER DAY ON MARIS.

AS LONG AS I'M "HANGING AROUND," I MIGHT AS WELL...

CLICKS

CLICKS

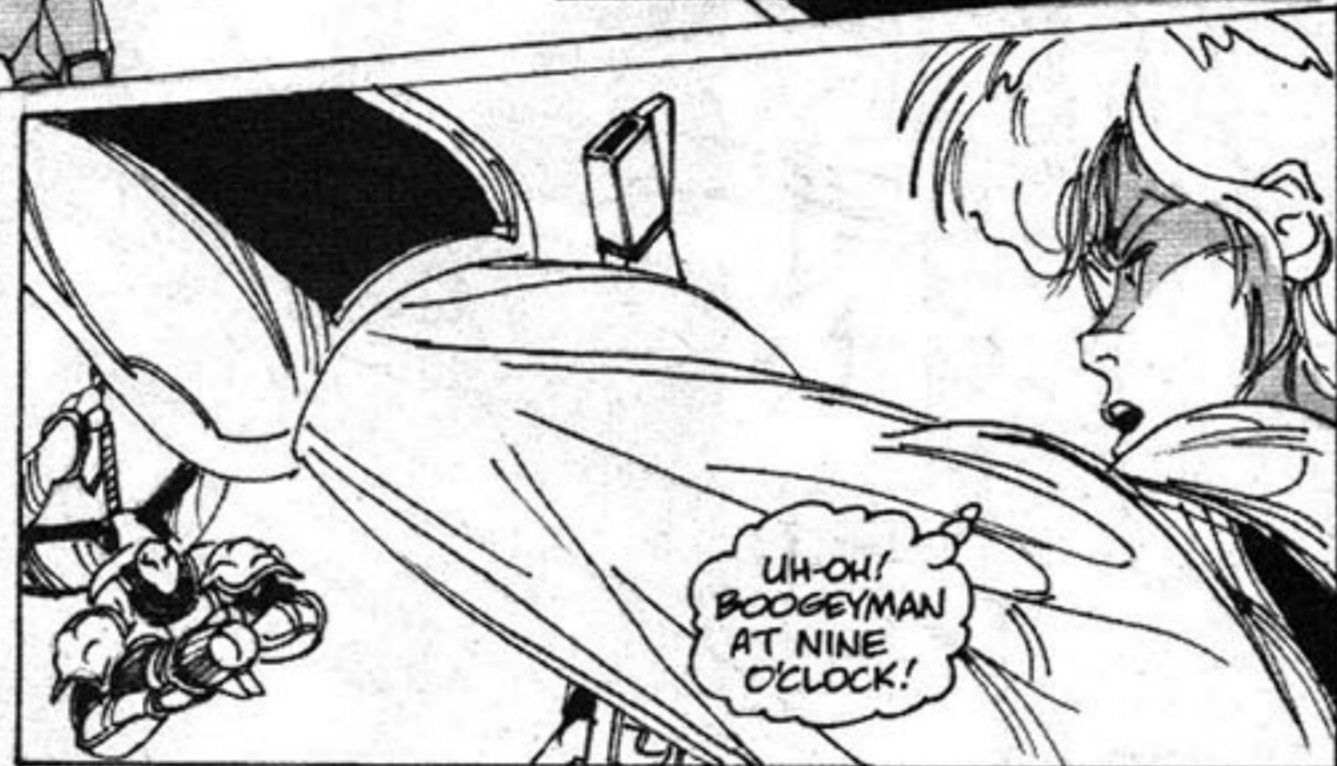
DARN! GOTTA RECHARGE!

J.J.'S IN TROUBLE!

I'LL TAKE CARE OF THOSE NOZA RIGHT NOW!

CHAMP!

IF YOU MISS AND HIT ANY PART OF THIS SILO, WE'LL ALL BE BLOWN TO KINGDOM COME!





HOW THE HECK DO I GET DOWN FROM HERE?!

NEXT ISSUE:
NEW WRITER HANK KANALZ
CREATES
COMPLETE CHAOS
WITH GUEST PENCILLER
KEITH CONROY!